



Skollerudåsen i Lommedalen (Bærum) 1901 - 1914 (brant ned)



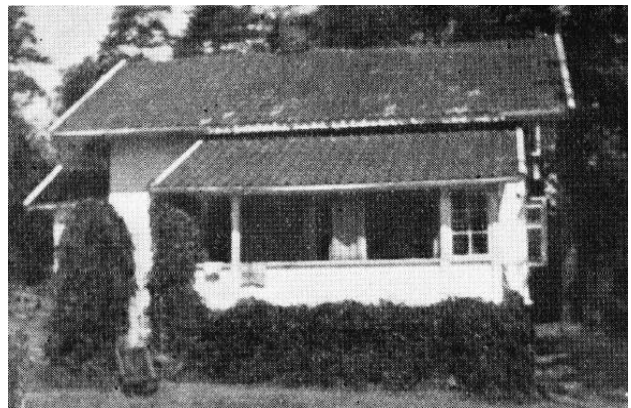
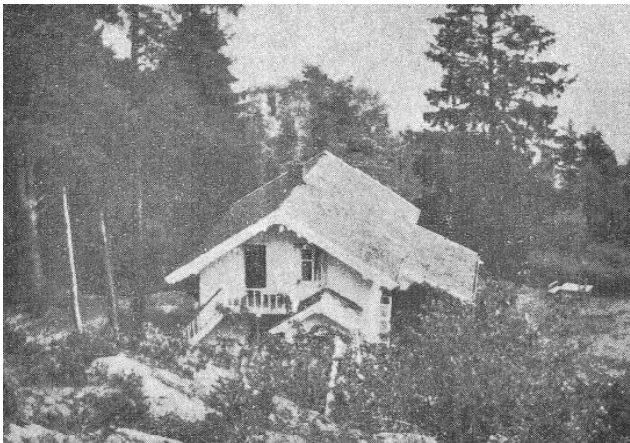
Skollerudåsen i Lommedalen (Bærum) 1916 - 1974 (brant ned)

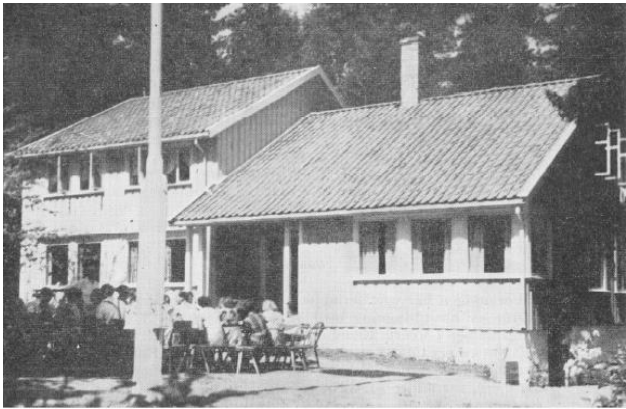


Lommedalen (Bærum) 1979 - 1994 (solgt)



Peiskroken (Nittedal) 1923 - 1934 (solgt)





Skaug (Nesodden) 1934 - i dag